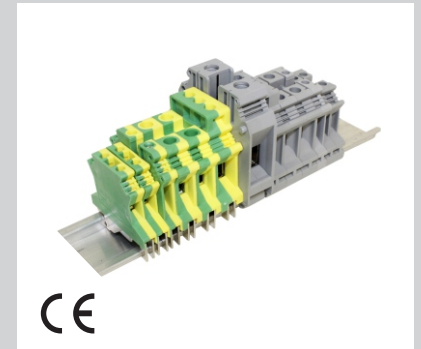
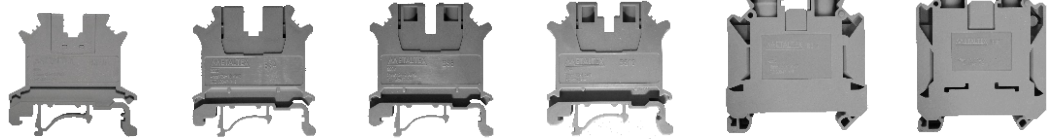


- Conectores de passagem com conexão por parafuso
- Montagem em trilho TS35 ou TS32
- De acordo com a norma IEC 60947

- Screw type terminal block
- TS35 or TS32 rail mounting
- According to IEC 60947

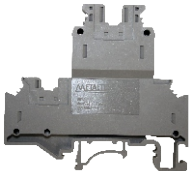


### Conectores de passagem simples / Simple terminal blocks



Modelo cinza / Grey model	BS2,5C	BS4C	BS6C	BS10C	BS16C	BS35C
Modelo Azul / Blue model	BS2,5A	BS4A	BS6A	BS10A	BS16A	BS35A
Tensão nominal / Nominal voltage	690V	800V	800V	800V	800V	800V
Corrente nominal / Nominal current	24A	32A	41A	76A	101A	125A
Cabo aplicável / Applicable cable	0,2 ~ 2,5mm <sup>2</sup>	0,2 ~ 4mm <sup>2</sup>	0,2 ~ 6mm <sup>2</sup>	0,5 ~ 10mm <sup>2</sup>	0,5 ~ 16mm <sup>2</sup>	0,2 - 35mm <sup>2</sup>
Dimensões (LxAxP) mm	42,5 x 40,8 x 6,2	42,5 x 45,7 x 6,2	42,5 x 45,7 x 8,2	42,5 x 45,7 x 10,2	51,0 x 50,0 x 12,2	53,5 x 61,8 x 16,0
Diagrama / Diagram						

### Conectores de passagem duplo / Two levels terminal blocks



Modelo cinza Grey model	Tensão nominal Nominal voltage	Corrente nominal Nominal current	Cabo aplicável Applicable cable	Dimensões (LxAxP) mm Dimensions (WxHxD) mm	Diagrama / Diagram
BSD4C	500V	32A	0,2 ~ 4mm <sup>2</sup>	67,2 x 61 x 8,7	

### Conectores terra / Ground terminal blocks



Modelo / Model	BS2,5T	BS4T	BS6T	BS10T	BS16T	BS35T
Cabo aplicável / Applicable cable	0,2 ~ 2,5mm <sup>2</sup>	0,2 ~ 4mm <sup>2</sup>	0,2 ~ 6mm <sup>2</sup>	0,5 ~ 10mm <sup>2</sup>	0,5 ~ 16mm <sup>2</sup>	0,2 ~ 35mm <sup>2</sup>
Dimensões (LxAxP) mm Dimensions (WxHxD) mm	42,9 x 40,6 x 6,2	42,5 x 45,8 x 6,2	42,9 x 45,8 x 8,2	42,8 x 45,9 x 10,2	51,0 x 47,5 x 12,2	53,5 x 56,3 x 16,0

### Porta fusível / Fuse holder



Modelo cinza Grey model	Tensão nominal Nominal voltage	Corrente nominal Nominal current	Cabo aplicável Applicable cable	Fusível aplicável Applicable fuse	Dimensões (LxAxP) mm Dimensions (WxHxD) mm
BS4-FHC	800V	6,3A	0,2 ~ 4mm <sup>2</sup>	5x20, 5x25 e / and 5x30mm	72,5 x 56,5 x 8,2

### Capa para bloco / Block cover



Modelo cinza Gray model	Conector aplicável Applicable block
BS-P2,5C	BS2,5
BS-P4-10C	BS4 - BS10
BS-P16C	BS16
BSD-ATC	BSD4
BSD-AIC	BSD4*

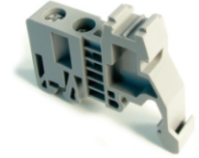
\*Capa adaptadora / Adapter cover

### Mini-separador / Mini separator



Modelo Model	Conector aplicável Applicable block
BS-APC	BS2,5 - BS35

### Poste final / Stop end



Modelo / Model
BM-AP

### Ponte conectora / Short bridge



Modelo Model	Conector aplicável Applicable block	Número de jumper Jumper quantity
BS-AJ2/4-10	BS2,5 - BS4 - BSD4	10
BS-AJ6-10	BS6	10
BS-AJ10-10	BS10	10
BS-AJ16-10	BS16	10
BS-AJ35-3	BS35	3

### Identificador / Identifier\*



Modelo Model	Conector aplicável Applicable block	Número de identificadores Identifiers quantity
BS-AI2,5	BS2,5	10
BS-AI4	BS4 - BSD4	10
BS-AI6	BS6	10
BS-AI10/35	BS10 - BS35	10

\*Sem marcação / Without marking